

## **Performance Report for San Diego Regional Center**

Every year, the Department of Developmental Services (DDS) contracts with regional centers in California to serve persons with developmental disabilities and families. And, every year DDS looks at how well the regional centers are doing. This report will give you information about the San Diego Regional Center (SDRC).

Last year, at SDRC we served about 18,840 consumers. The charts on page 2 tell you about the consumers we serve. You'll also see how well we are doing in meeting our goals and in fulfilling our contract with DDS.

At SDRC, we want to improve every year, do better than the state average, and meet or exceed the DDS standard. As you can see in this report, we did well in all areas that were measured.

We hope this report helps you learn more about SDRC. If you have any questions or comments, please contact us!

This report is a summary. To see the complete report, go to: [www.sdrc.org](http://www.sdrc.org)

Or contact the SDRC Public Information Coordinator at 858-576-2966

Carlos Flores  
Executive Director, San Diego Regional Center

# San Diego Regional Center

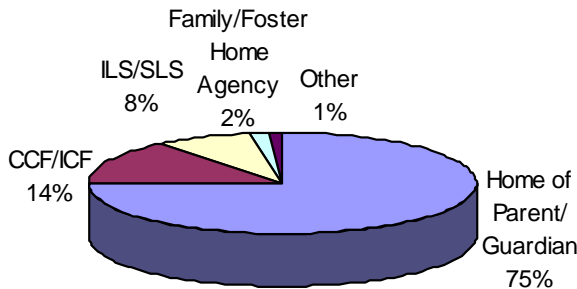
Carlos Flores, Executive Director  
 4355 Ruffin Road, Suite 200, San Diego, CA 92123  
 Phone: (858) 576-2996 • Fax: (858) 576-2873



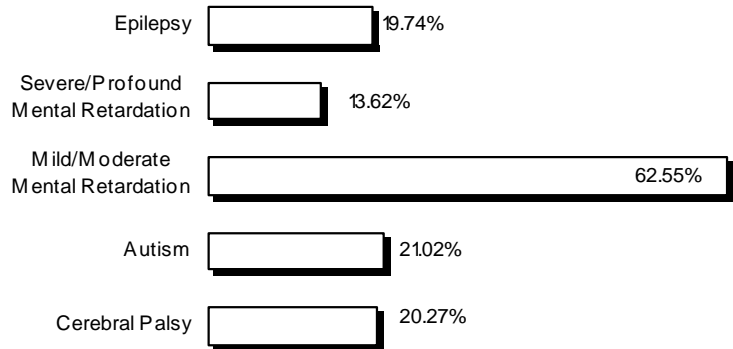
## Who uses SDRC?

These charts tell you about who SDRC consumers are and where they live.

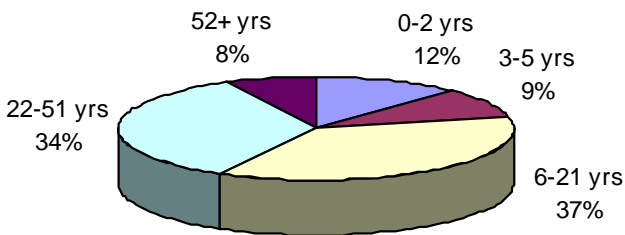
**WHERE SDRC CONSUMERS LIVE**



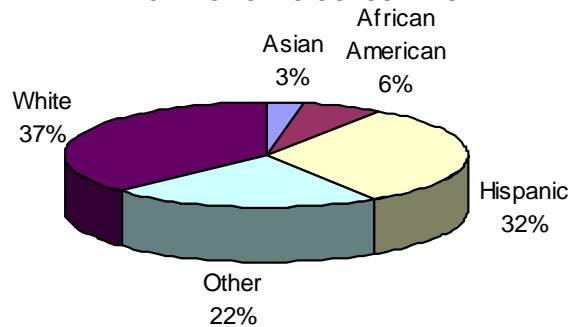
**PRIMARY DIAGNOSIS OF SDRC CONSUMERS**



**AGE OF SDRC CONSUMERS**



**ETHNICITY OF SDRC CONSUMERS**



## How well is SDRC performing?

This chart tells you about 5 areas where DDS wants each regional center to keep improving.

The first column tells you how SDRC was doing at the beginning of 2009. And, the second column shows how SDRC was doing at the end of 2009.

To see how SDRC compares to the other regional centers in the state, compare the numbers to the state averages (in the shaded columns).

Regional Center Goals (based on Lanterman Act)	December 2008		December 2009	
	State Average	SDRC	State Average	SDRC
Less consumers live in developmental centers	1.03%	0.82%	0.91%	0.75%
More children live with families	98.38%	98.38%	98.48%	98.53%
More adults live in home settings*	72.25%	70.46%	73.20%	71.34%
Less children live in large facilities (more than 6 people)	0.14%	0.28%	0.13%	0.28%
Less adults live in large facilities (more than 6 people)	4.55%	4.40%	4.10%	3.87%

\* Home settings include: independent living, supported living, Adult Family Home Agency homes, and consumers' family homes.

**San Diego Regional Center**

Carlos Flores, Executive Director

4355 Ruffin Road, Suite 200, San Diego, CA 92123

Phone: (858) 576-2996 • Fax: (858) 576-2873

**Did SDRC meet DDS standards?**

Read below to see how well SDRC did in meeting DDS compliance standards:

Areas Measured	Last Period	Current Period
Passes independent audit	Yes	Yes
Passes DDS audit	Yes	Yes
Audits vendors as required	Met	Met
Didn't overspend operations budget	Yes	Yes
Participates in the federal waiver	Yes	Yes
CDERs are updated as required ( <i>CDER is the Client Development Evaluation Report with information about the consumer's diagnosis</i> )*	NA	NA
Intake/Assessment timelines for consumers age 3 or older met	92.95%	96.38%
IPP ( <i>Individual Program Plan</i> ) requirements met	99.87%	99.72%
IFSP ( <i>Individualized Family Service Plan</i> ) requirements met	89.12%	88.31%

\*Measure temporarily suspended pending implementation of the Revised CDER.

**Want more information?**To see the complete report, go to: [www.sdrc.org](http://www.sdrc.org)

Or contact the SDRC Public Information Coordinator at 858-576-2966