

# INCIDENT TYPES

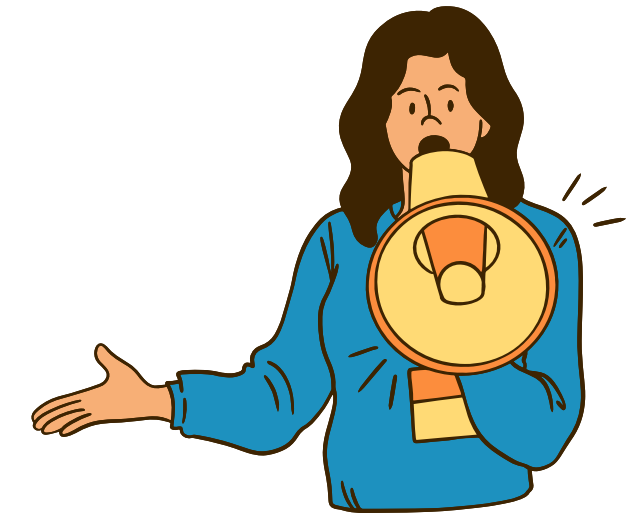


Aggressive Acts
AGGRESSIVE ACT INVOLVING A WEAPON
AGGRESSIVE ACT TO ANOTHER CONSUMER
AGGRESSIVE ACT TO FAMILY/VISITORS
AGGRESSIVE ACT TO SELF
AGGRESSIVE ACT TO STAFF
COMMUNITY SAFETY
MINOR VERBAL AGGRESSION

Law Involvement
AGGRAVATED ASSAULT
ARRESTS
BURGLARY
LARCENY
LAW ENFORCEMENT INVOLVEMENT
MISSING PERS-LAW NOTIF-NOT VND CRE
MISSING PERSON-LAW NOTIF-VND CARE
PERSONAL ROBBERY
DEATH
PROPERTY DAMAGE
RAPE OR ATTEMPTED RAPE
SEVERE VERBAL THREATS
THEFT BY A CONSUMER
UNAUTHORIZED ABSENCE-LAW NOT NOTIF

Abuse
ALLEGED ABUSE-OTHER
ALLEGED CONSUMER NEGLECT-OTHER
ALLEGED EMOT/MENTAL ABUSE
ALLEGED EMOT/MENTAL ABUSE-VND CARE
ALLEGED PHYSICAL ABUSE
ALLEGED PHYSICAL ABUSE-VND CARE
ALLEGED SEXUAL ABUSE
ALLEGED SEXUAL ABUSE-VND CARE
ALLEGED VIOLATION OF RIGHTS
ALLGD PHYS/CHEM RESTRAINT-VND CARE
ALLGD CONS FINANCIAL ABUSE
ALLGD CONS FINANCL ABUSE-VND CARE
FAIL TO ASSIST W/PERS HYGIENE
FAIL TO ASST W/PERS HYG-VND CARE
FAIL TO PREV MALNUTRITION-VND CARE
FAIL TO PROTCT FRM H/S HAZ-VND CAR
FAIL TO PROTECT FROM H/S HAZARDS
FAIL TO PROV CARE-ELDER/ADULT-VND
FAIL TO PROV FOOD/CLOTH/SHLT-VND C
FAIL TO PROV MEDICAL CARE
FAIL TO PROV MEDICAL CARE-VND CARE
OTHER
OTHER SEXUAL INCIDENT

Medical	
BITES BREAK SKIN/REQ TRMT	INJURY-ACCIDENT
BITES BREAK SKIN/REQ TRMT-VND CARE	INJURY-FROM A BEHAVIOR EPISODE
BURNS REQ MEDICAL TRMT-VND CARE	INJURY-FROM ANOTHER CONSUMER
CHOKING	INJURY-FROM SEIZURE
CONDITION REQ MED INTERVENTION	INJURY-UNKNOWN ORIGIN
COVID 19 VIRUS	INTERNAL BLEEDING-VND CARE
DISEASE OUTBREAK	LACERATIONS-SUTURES/STAPLES-VND CR
DRUG/ALCOHOL ABUSE	MEDICAL EMERGENCY-OTHER
EMERGENCY ROOM VISIT	MEDICATION ERROR
FRACTURES	MEDICATION ERROR-VND CARE
FRACTURES-VND CARE	MEDICATION REACTIONS
HOSPITAL/CARDIAC	MEDICATION REACTIONS-VND CARE
HOSPITAL/CARDIAC-VND CARE	PLANNED HOSPITALIZATION
HOSPITAL/DIABETES-VND CARE	SEIZURES
HOSPITAL/DUE TO SEIZURE	SUICIDE ATTEMPT
HOSPITAL/DUE TO SEIZURE-VND CARE	SUICIDE THREAT
HOSPITAL/INTERNL INFECTION	VOLUNTARY PSYCH. HOSPITALIZATION
HOSPITAL/INTRNL INFECT-VND CARE	
HOSPITAL/INVOL PSYCH ADM	
HOSPITAL/INVOL PSYCH ADM-VND CARE	
HOSPITAL/NUTRITION DEFICIENCY	
HOSPITAL/NUTRITION DEFIC-VND CARE	
HOSPITAL/OTHER	
HOSPITAL/RESP ILLNESS	
HOSPITAL/RESP ILLNESS-VND CARE	
HOSPITAL/WOUND/SKIN CARE	
HOSPITAL/WOUND/SKN CARE-VND CARE	
INC REQ PSY EMG TEAM/NO HOSP	
INJURY ACCID-DISLOCATION-VND CARE	



**\*SDRC is requiring that ALL Hospitalizations/ ER visits are documented via SANDIS SIR. Doing so assists SDRC in analyzing trends and identifying opportunities for improved care.\***



# **IF UNSURE, SUBMIT A SIR!**

**\*If a client's health and safety are being affected, enter a SIR.**

**If you are unsure on which Incident Type to enter, select "Other". A SIR Coordinator will adjust it as appropriate\***

# **IF INCIDENT OCCURS UNDER VENDORED CARE, USE THE "VND CARE" INCIDENT TYPE.**

**\*SLS & Residential Care Providers are considered 24-hour care; Please submit SIRs even if the client is not with the vendor at the time of the incident\*  
i.e. Med Errors / Hospitalizations / Abuse during family visits/ School/ Day Program**